
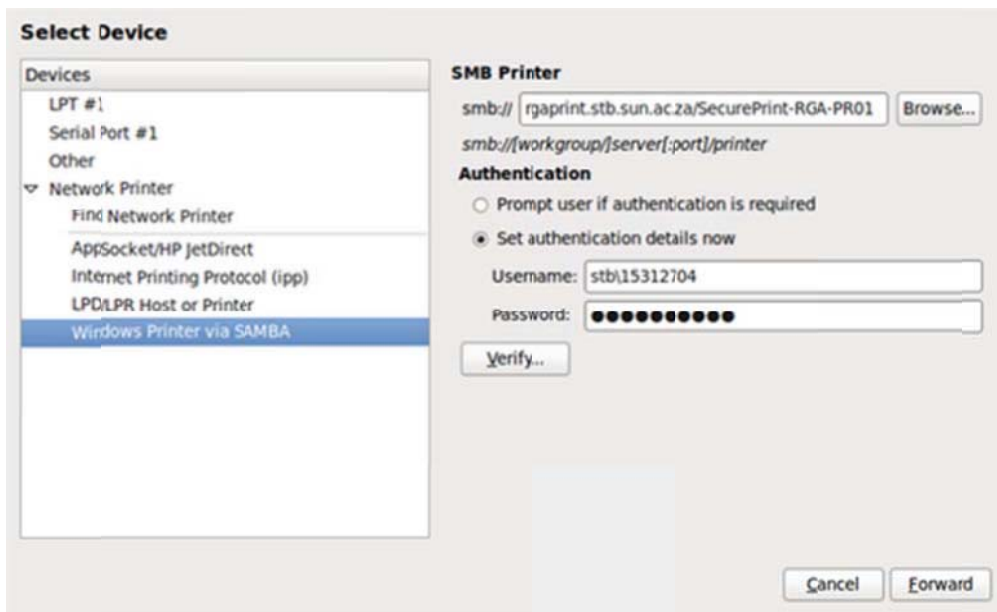
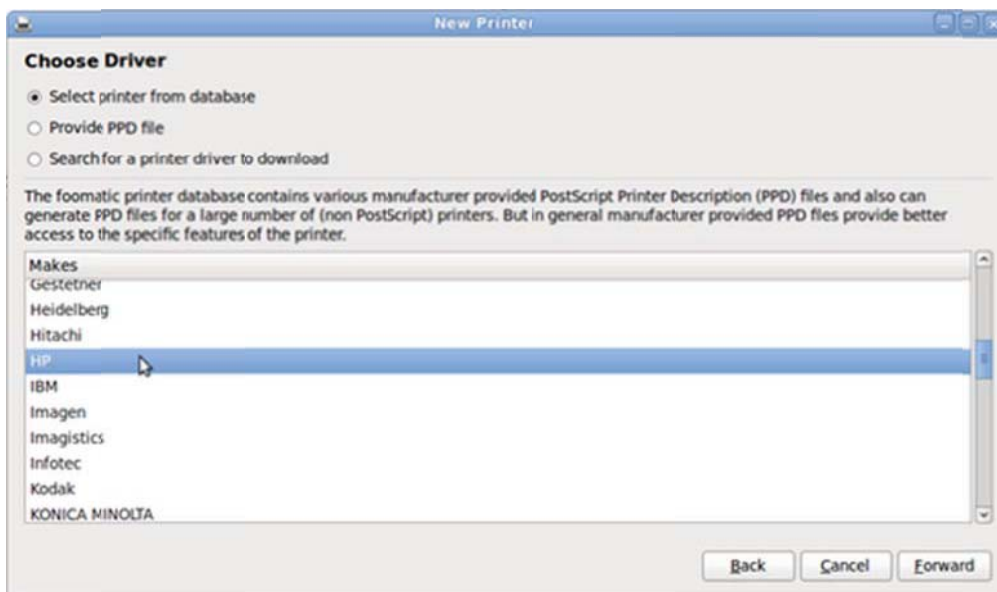


How to print from Ubuntu to SAFECOM

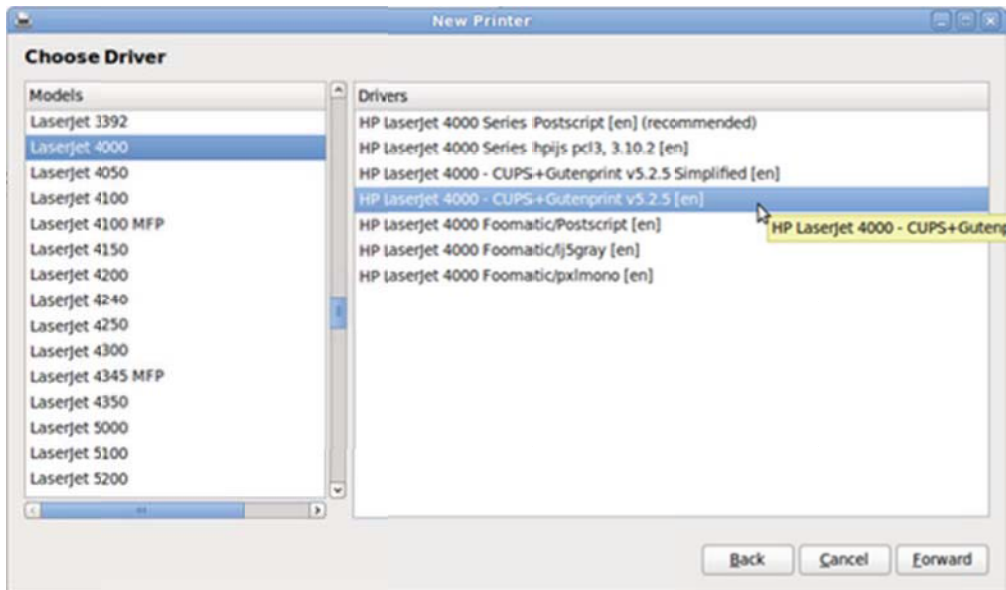
- In Ubuntu (with the [Unity](#) desktop) click on the gear icon  and select **Printers**.
- Click on **Add**.
- Under **Network Printer** go to **Windows Printer via SAMBA**.
- Under **SMB Printer** type in **stbsec05.stb.sun.ac.za/STB_PRINT_Q01**
- Under **Authentication** select **Set authentication details now**
- For username use **stb\<your_student_number>** and your password is your normal Inetkey/MyMaties login.
- Click on **Forward** and the wizard will now search for a driver. It will fail.



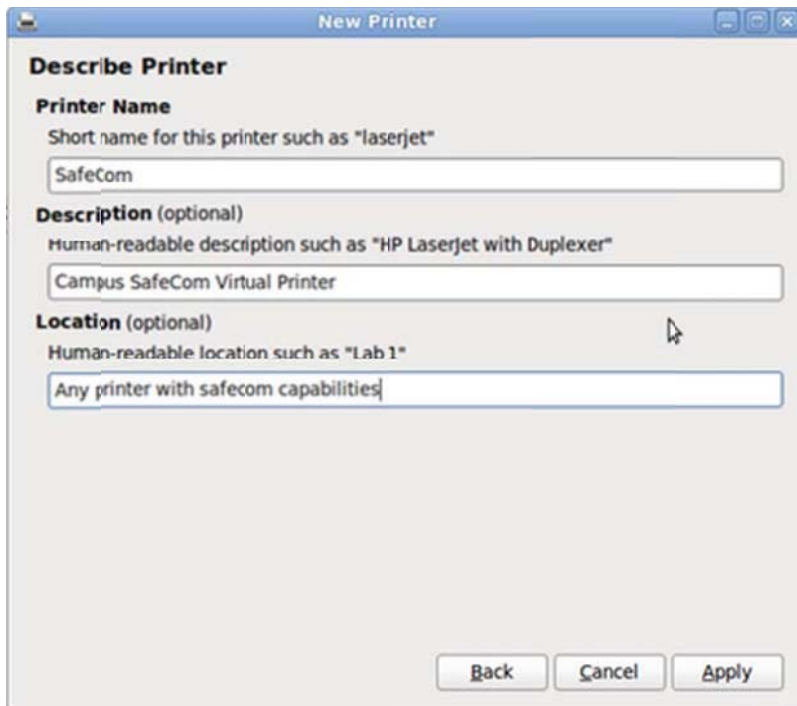
- In the next window, **Choose Driver**, select **HP** and click forward.



- Under models select **LaserJet 4000**, and under drivers **HP LaserJet 4000 - CUPS+Gutenprint v5.2.5 [en]** and click forward. To get colour printing choose **HP Color Inkjet Printer CP1160 - CUPS+Gutenprint v5.2.5**.

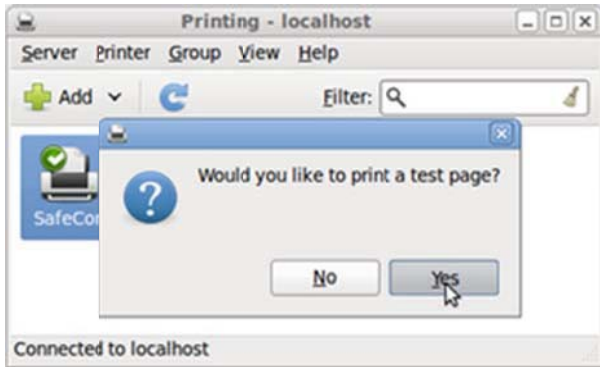


- Now choose a name and description for the printer and click on **Apply**.



- Say **Yes** if it ask to print a test page.





- If you authenticated correctly, then next to **Printer State** it should say "Idle - Finished page 1"

Check print queue

The printer is now set up, but we need to check if it queued the test page for printing later.

- Go to <http://rgaprint.stb.sun.ac.za/safecom>, log in and click on documents.
- If there is something like "Remote Downlevel Document" in the list, the test page is in the queue to be printed the next time you swipe your card at the printer.

Price	Document name	Pages	Generated	Paper size	Driver name	Retained
0.30	Remote Downlevel Document	1	10-08-17 01:23	A4	HP Universal Printing PCL 5	no

