

Printer setup

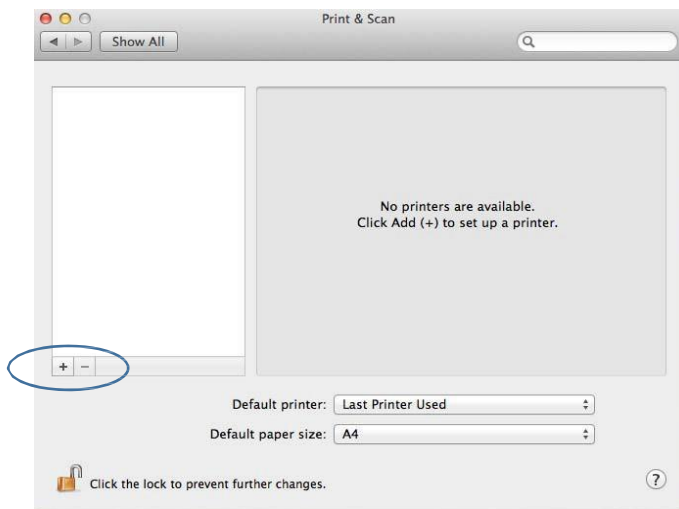
SafeCom (SecurePrint)

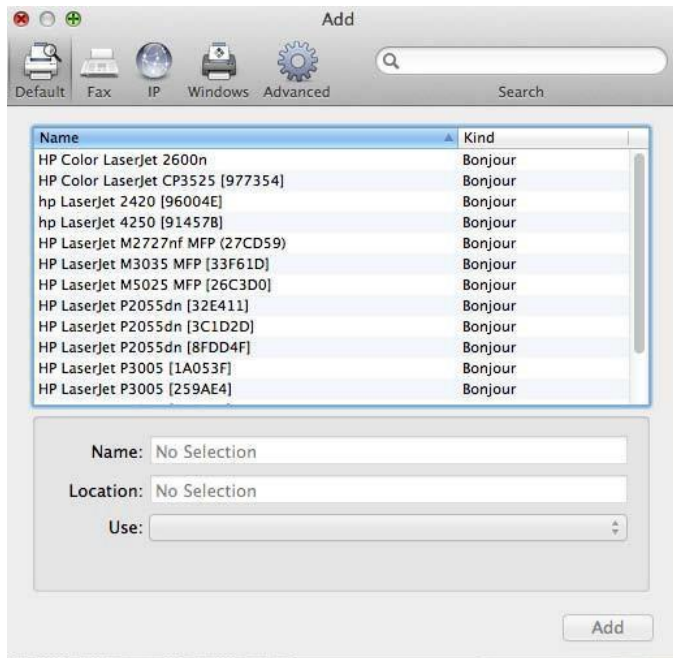
Click On System Preference

Navigate and Click On **Print and Scan**



Click on the **Plus Button**

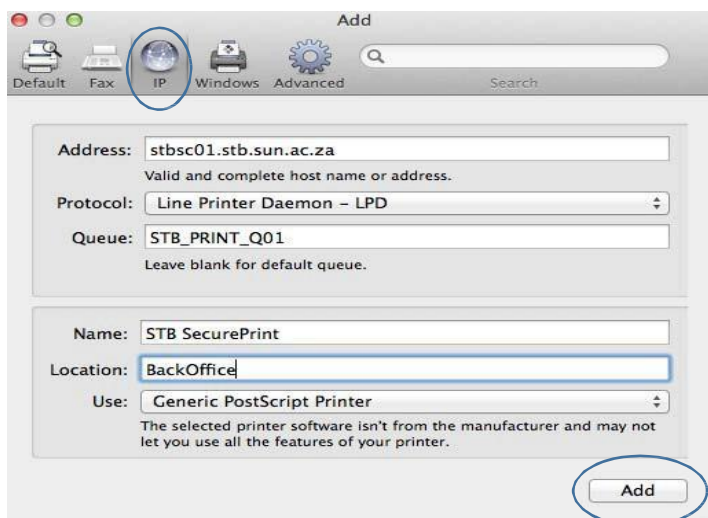




Click on the **IP** Icon

Fill in Detail for either STB Secure Print or TYG Secure Print

STB Secure Print Queue Configuration, Then Click **Add**



Staff - \\stbsc01.stb.sun.ac.za\STB_PRINT_Q01

FHARGA -- \\stbsc02.stb.sun.ac.za\STB_PRINT_Q01

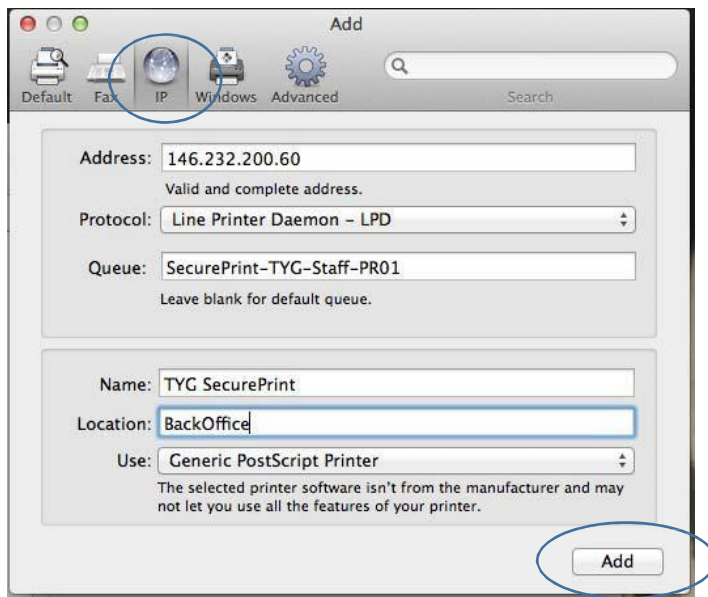
NARGA -- \\stbsc03.stb.sun.ac.za\STB_PRINT_Q01

HUMARGA-- \\stbsc04.stb.sun.ac.za\STB_PRINT_Q01

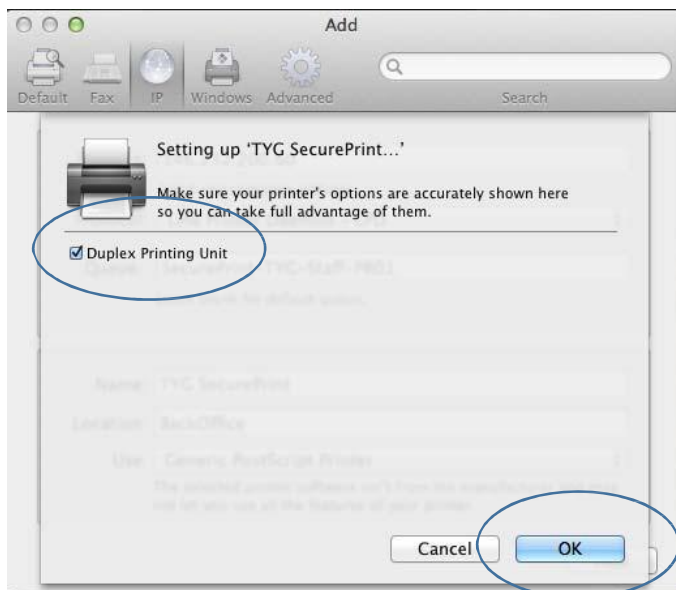
FIRGA, Biblioteek - - \\stbsc05.stb.sun.ac.za\STB_PRINT_Q01



TYG Secure Print Queue Configuration, Then Click **Add**



Select **Duplex Printing** and Click **Ok**.



Navigate and Click On **Users and Groups**

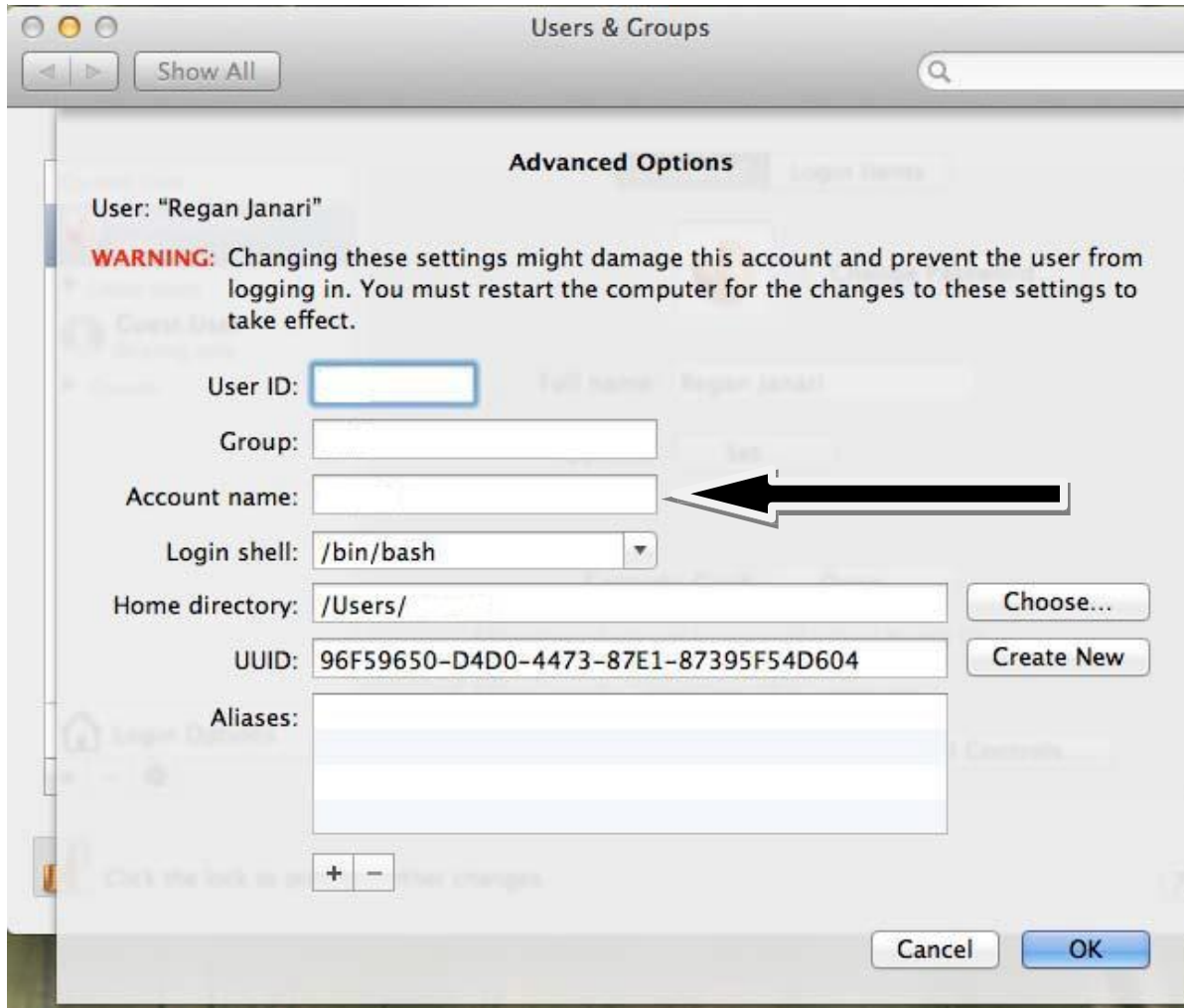


Right Click on the Current User and Click on **Advanced Options**



Change **Account Name** to your Student Number or Alias name if you have one.

Please **DO NOT MAKE** any other changes here, only change account name to your student number or alias name.



And Click **OK**.



Setting Up Printing with Printer Queue Name

The screenshot shows the 'Add' printer configuration window. At the top, there are icons for 'Default', 'Fax', 'IP', 'Windows', and 'Advanced', along with a search bar. The main area contains the following fields:

- Address:** stbsc01.stb.sun.ac.za
Valid and complete host name or address.
- Protocol:** Line Printer Daemon - LPD
- Queue:** s-toetsapple-pr01
Leave blank for default queue.
- Name:** s-toetsapple-pr01
- Location:** (empty)
- Use:** Generic PostScript Printer
The selected printer software isn't from the manufacturer and may not let you use all the features of your printer.

An 'Add' button is located at the bottom right of the window.

- Add push printer server **Address** eg: stbpushprint.stb.sun.ac.za **Or** stbsc01.stb.sun.ac.za
- **Protocol** must be Line Printer Daemon – LPD
- **Queue** must be the printer queue name
- **Name** can be anything that the user wants to call the printer, but IT Recommend to maintain the Name to the Queue name

